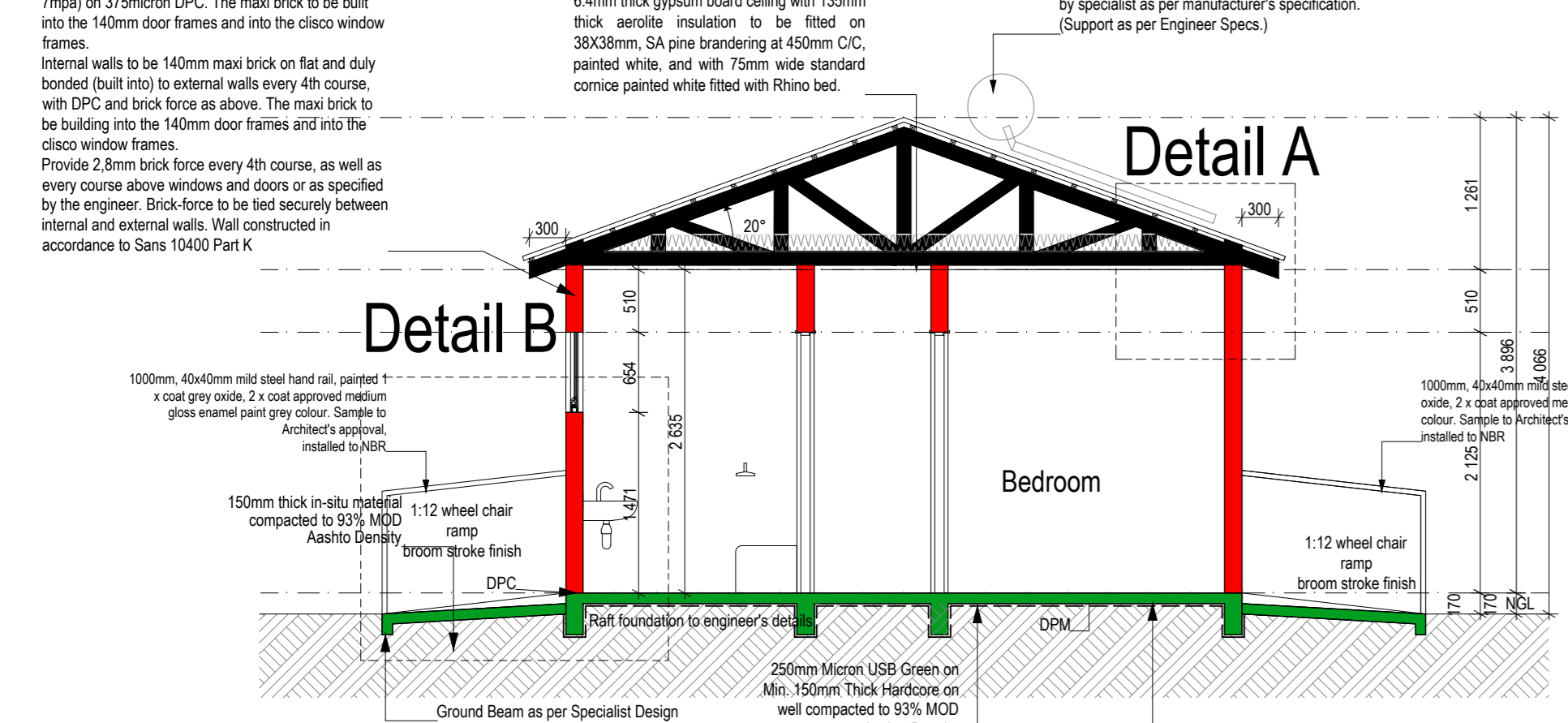
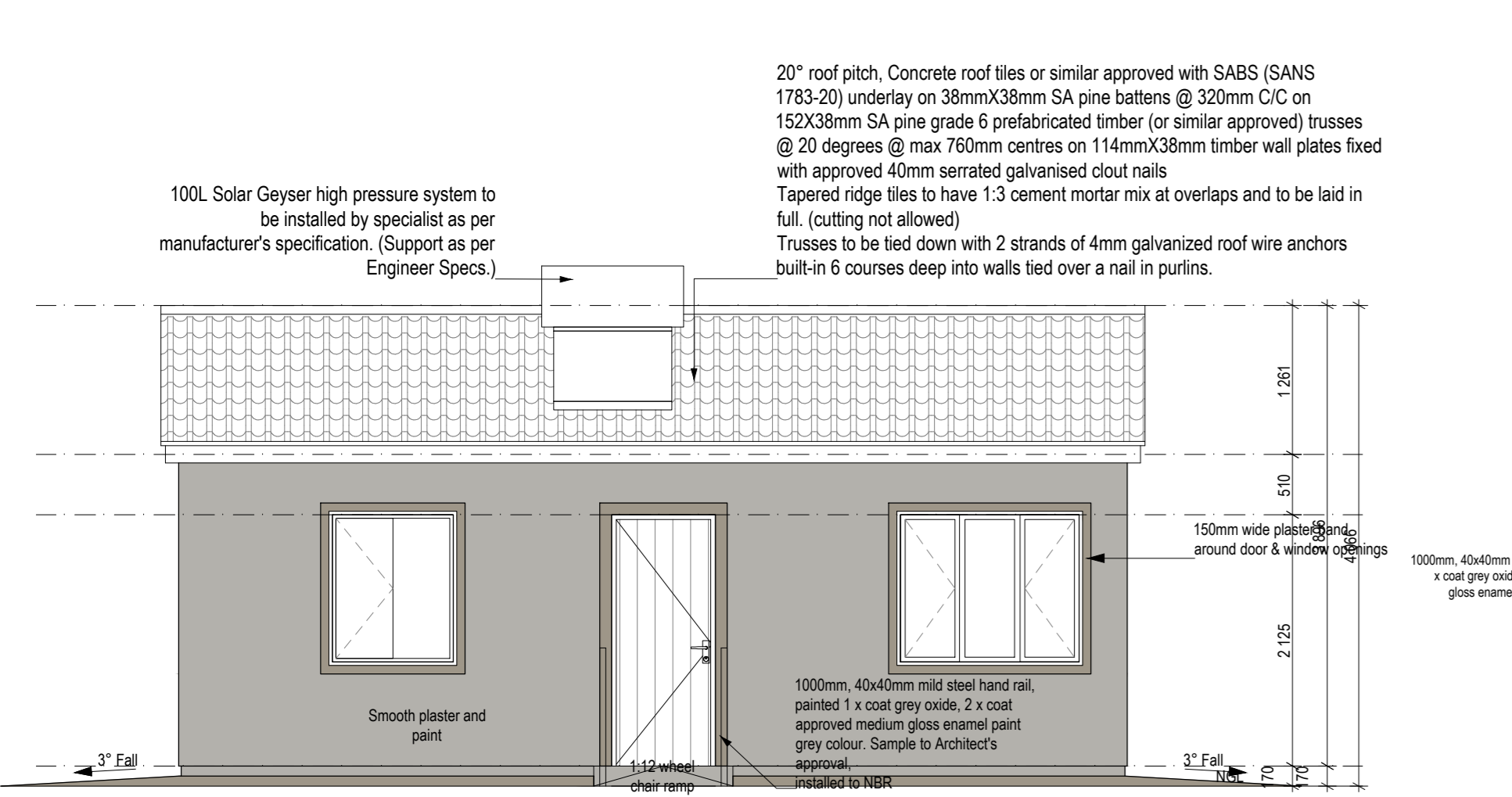


Type 1 Ground Floor Plan
45m²
Scale: 1-50

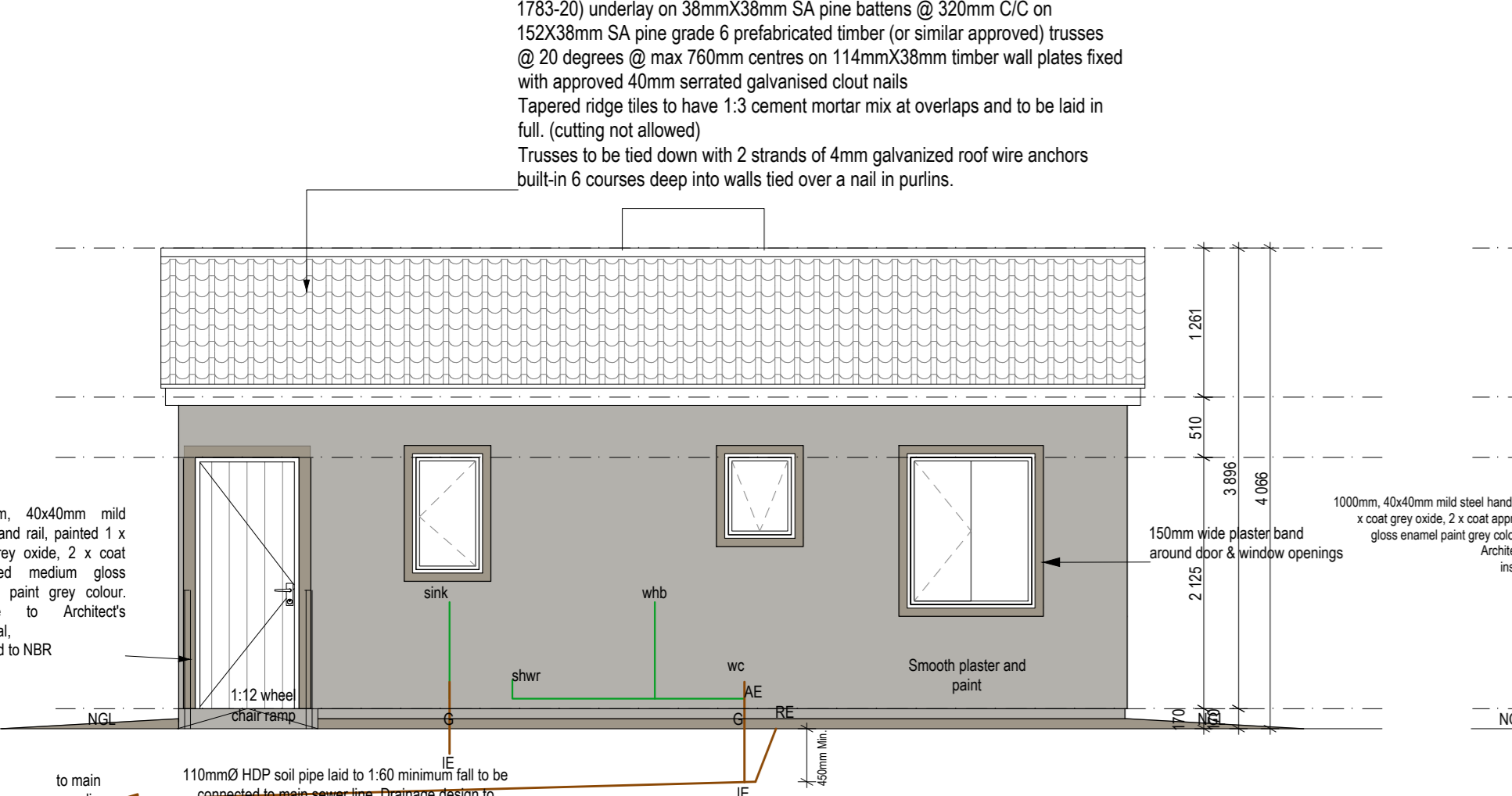
NOTE:
All Wood to comply to SANS 10163
-Foundation/Walls/ Structural / and
Roof to be endorsed by Structural
Engineer.



Section A
Scale: 1-50

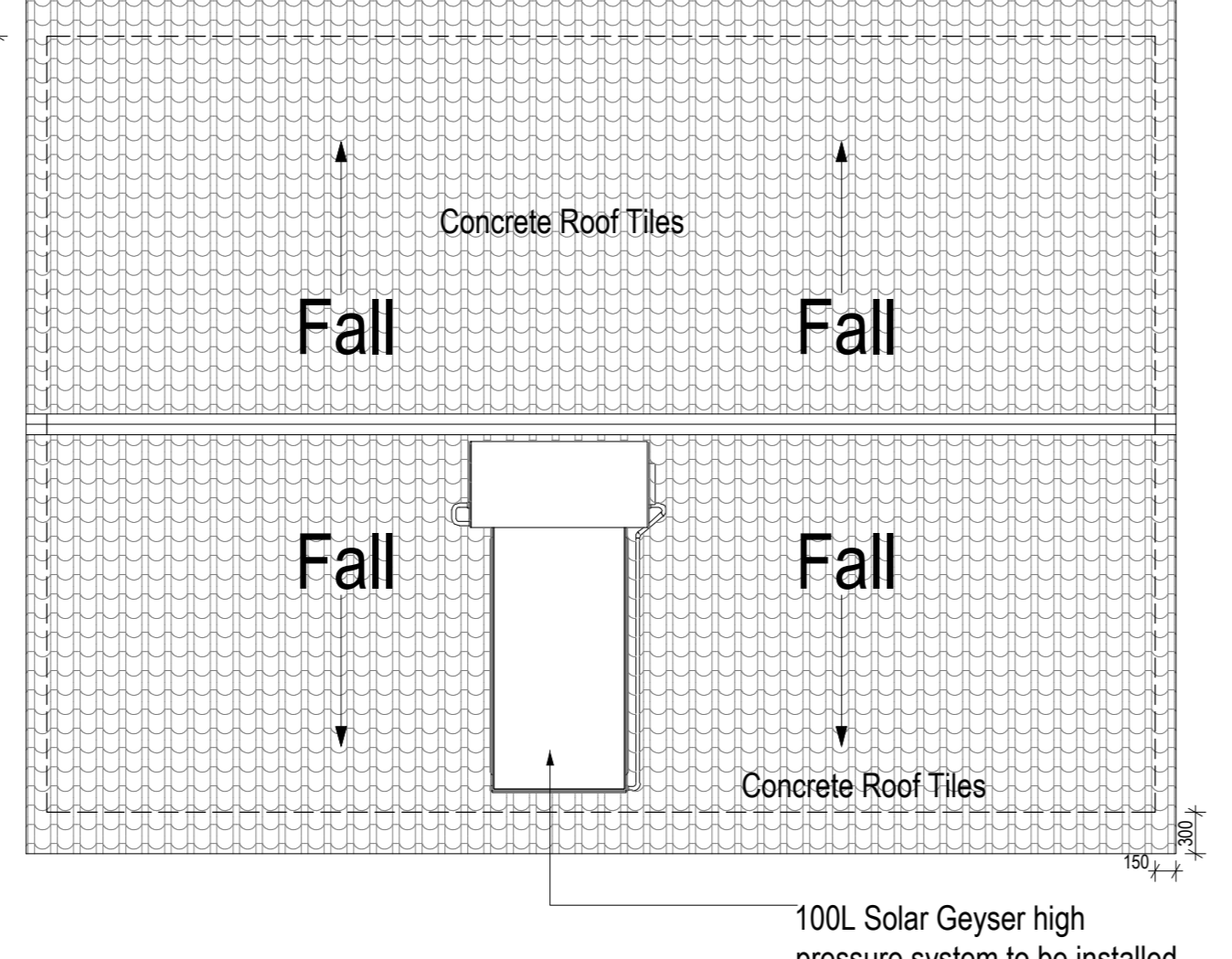


Elevation 1
Scale: 1-50



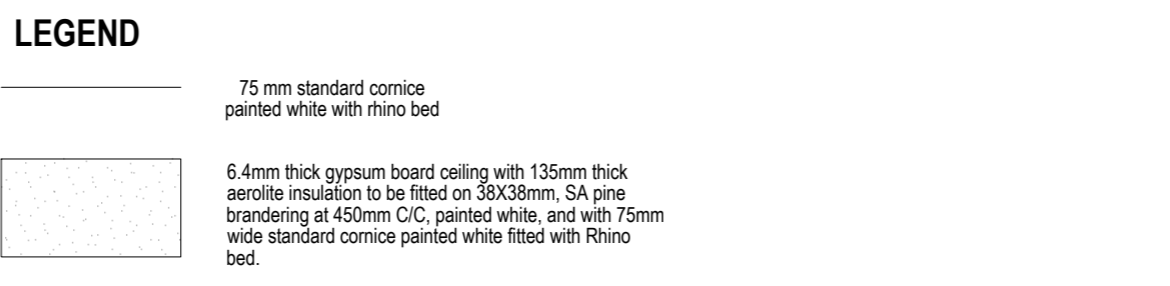
Elevation 3
Scale: 1-50

20° roof pitch. Concrete roof tiles or similar approved with SABS (SANS 1783-20) underlay on 38mmx38mm SA pine battens @ 320mm C/C on 152x38mm SA pine grade 6 prefabricated timber (or similar approved) trusses @ 20 degrees @ max 760mm centres on 114mmx38mm timber wall plates fixed with approved 40mm serrated galvanised clout nails. Tapered ridge tiles to have 1:3 cement mortar mix at overlaps and to be laid in full. (cutting not allowed) Trusses to be tied down with 2 strands of 4mm galvanised roof wire anchors built-in 6 courses deep into walls tied over a nail in purfins. Barge boards (200mmx15mm) to the gable ends and fascia boards to the eaves end of the roof and nailed with 40mm serrated galvanised clout nails. Barge & Fascia board to be painted to match plaster bands. Storm clips on the bottom 2 rows on both eaves



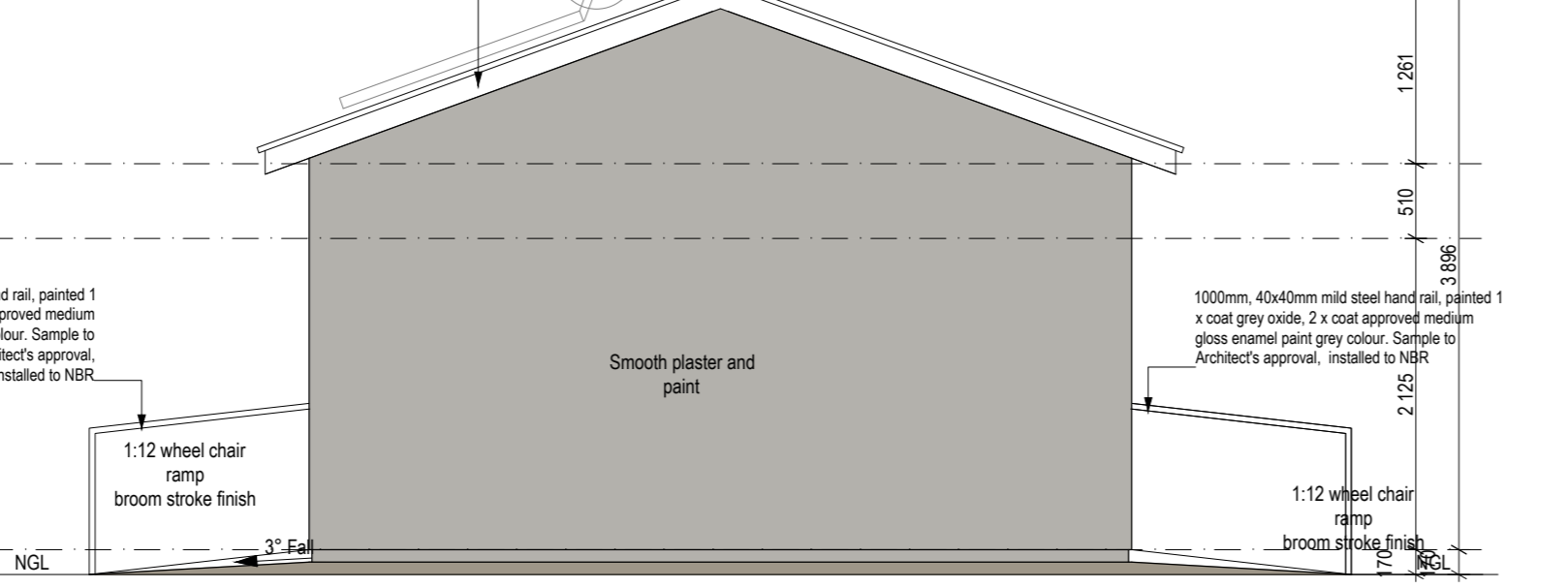
Type 1-Roof Plan
Scale: 1-50

100L Solar Geyser high pressure system to be installed by specialist as per manufacturer's specification. (Support as per Engineer Specs.)

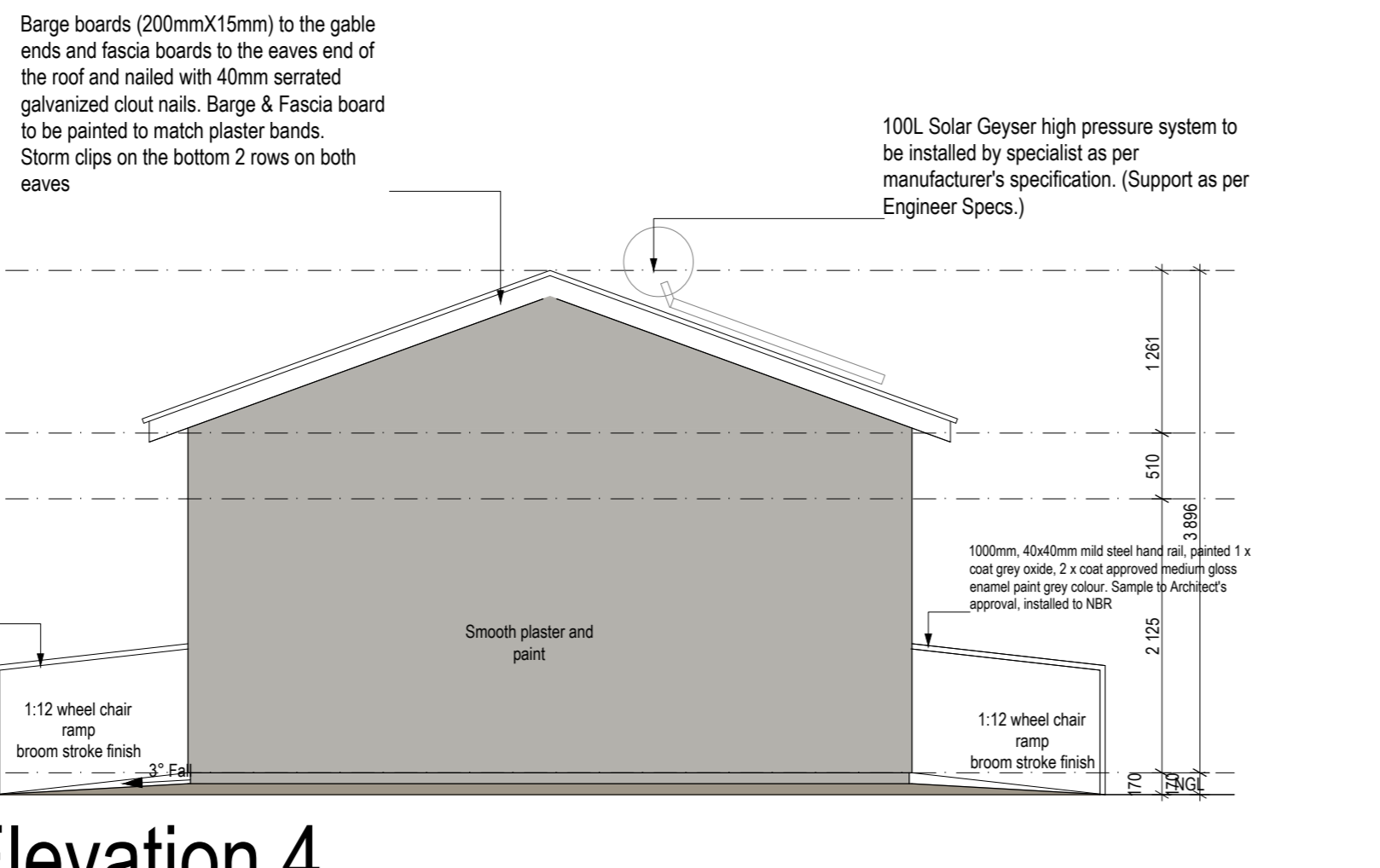


Type 1 Ceiling Layout Plan
Scale: 1-50

20° roof pitch. Concrete roof tiles or similar approved with SABS (SANS 1783-20) underlay on 38mmx38mm SA pine battens @ 320mm C/C on 152x38mm SA pine grade 6 prefabricated timber (or similar approved) trusses @ 20 degrees @ max 760mm centres on 114mmx38mm timber wall plates fixed with approved 40mm serrated galvanised clout nails. Tapered ridge tiles to have 1:3 cement mortar mix at overlaps and to be laid in full. (cutting not allowed) Trusses to be tied down with 2 strands of 4mm galvanised roof wire anchors built-in 6 courses deep into walls tied over a nail in purfins. Barge boards (200mmx15mm) to the gable ends and fascia boards to the eaves end of the roof and nailed with 40mm serrated galvanised clout nails. Barge & Fascia board to be painted to match plaster bands. Storm clips on the bottom 2 rows on both eaves



Elevation 2
Scale: 1-50

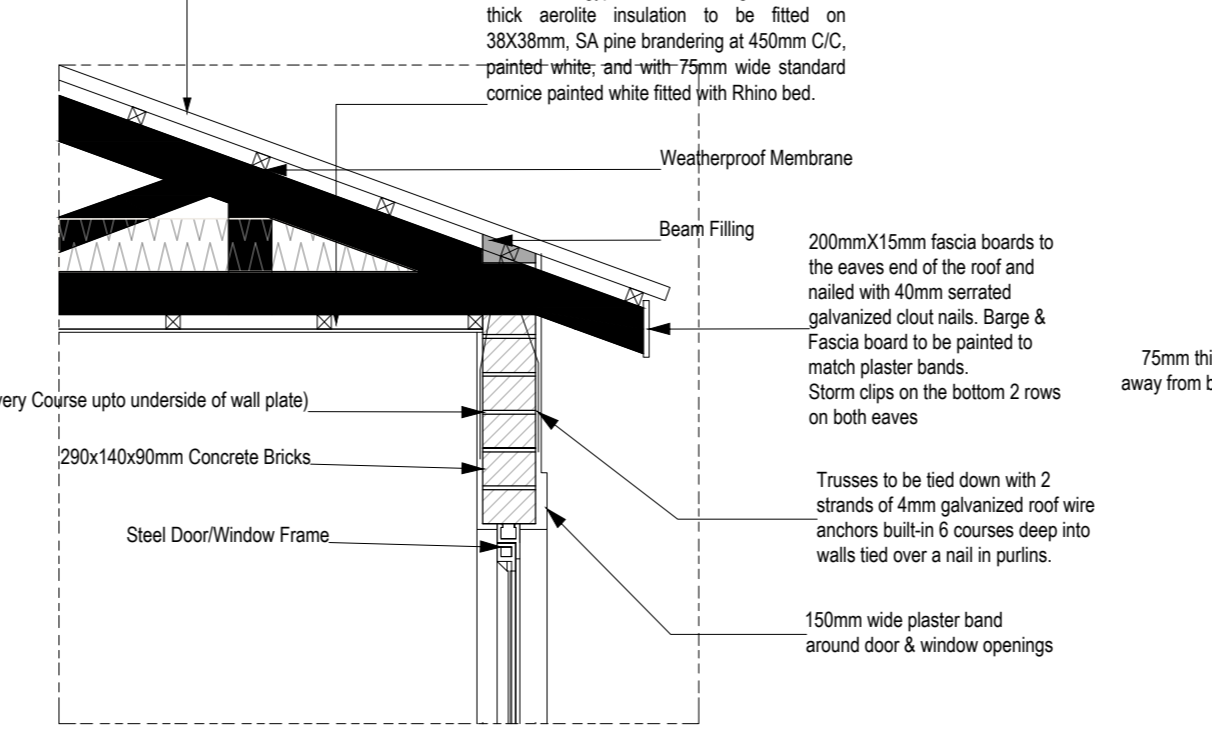


Elevation 4
Scale: 1-50

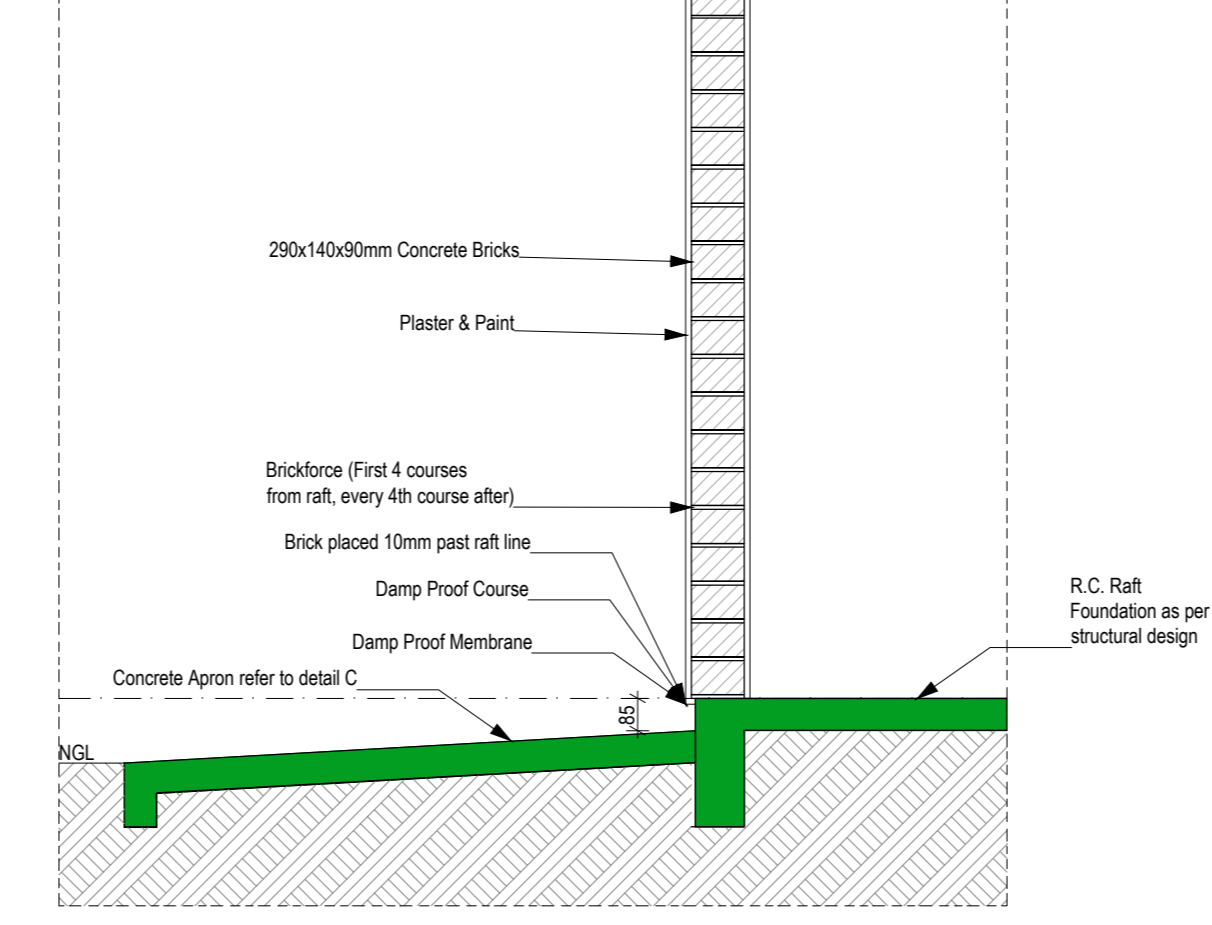
DOOR CODE	LOCATION	ALL EXTERNAL DOORS	ALL INTERIOR DOORS	PARA. W/ DOOR
NUMBER REQUIRED	DO	2 PER UNIT	3 PER UNIT	1 PER PARA. UNIT
DOOR DESCRIPTION	D1	1120x2000mm framed back solid metal framed and ledged door to be made out of oak, steel, finger lock, semi solid composite board/ply core gaffer lock block, composite board cross banding and hand/face veneer.	1120x2000mm Timber framed door to be made out of oak, steel, finger lock, semi solid composite board/ply core gaffer lock block, composite board cross banding and hand/face veneer.	1120x2000mm Timber framed door to be made out of oak, steel, finger lock, semi solid composite board/ply core gaffer lock block, composite board cross banding and hand/face veneer.
DOOR FINISH		1 x coat primer and 2 x coat approved wash primer to architect's spec.	1 x coat primer and 2 x coat approved medium gloss interior paint colour to architect's spec.	1 x coat primer and 2 x coat approved medium gloss interior paint colour to architect's spec.
FRAME DESCRIPTION		1 x 60mm steel double rebated jamb frame with 24 40mm rebated jamb pins and 24 40mm rebated jamb pins.	1 x 60mm steel double rebated jamb frame with 24 40mm rebated jamb pins and 24 40mm rebated jamb pins.	1 x 60mm steel double rebated jamb frame with 24 40mm rebated jamb pins and 24 40mm rebated jamb pins.
FRAME FINISH		1 x coat primer and 2 x coat approved medium gloss interior paint grey colour. Sample to Architect's approval.	1 x coat primer and 2 x coat approved medium gloss interior paint grey colour. Sample to Architect's approval.	1 x coat primer and 2 x coat approved medium gloss interior paint grey colour. Sample to Architect's approval.
IRON MONGERY & ACCESSORIES		3 lever mortice locks	3 lever mortice locks	3 lever mortice locks

WINDOW CODE	LOCATION	ALL EXTERNAL DOORS	ALL INTERIOR DOORS	PARA. W/ DOOR
NUMBER REQUIRED	W1	2 PER UNIT	3 PER UNIT	1 PER PARA. UNIT
WINDOW DESCRIPTION	W1	1500mm x 1500mm window frame in solid and approved.	1500mm x 1500mm window frame in solid and approved.	1500mm x 1500mm window frame in solid and approved.
WINDOW FINISH		1 x coat primer and 2 x coat approved medium gloss exterior paint.	1 x coat primer and 2 x coat approved medium gloss exterior paint.	1 x coat primer and 2 x coat approved medium gloss exterior paint.
GLAZING		3 mm clear float glass in panels up to 1500mm x 1500mm, and 4 mm clear float glass in panels above 1500mm x 1500mm, in accordance with the relevant section guide for safety.	3 mm clear float glass in panels up to 1500mm x 1500mm, and 4 mm clear float glass in panels above 1500mm x 1500mm, in accordance with the relevant section guide for safety.	3 mm clear float glass in panels up to 1500mm x 1500mm, and 4 mm clear float glass in panels above 1500mm x 1500mm, in accordance with the relevant section guide for safety.
IRON MONGERY		Factory supplied handles and hinges	Factory supplied handles and hinges	Factory supplied handles and hinges

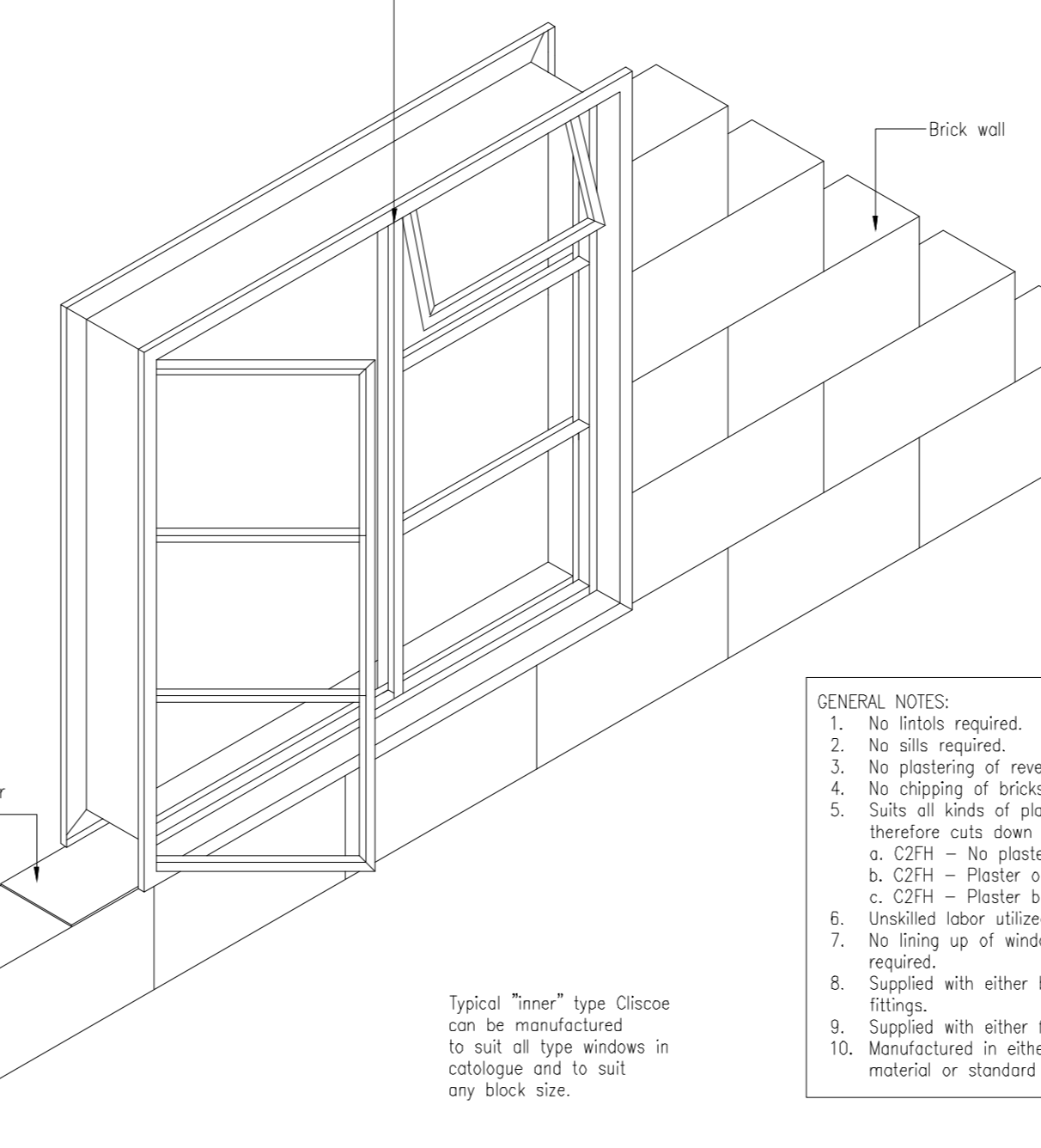
20° roof pitch. Concrete roof tiles or similar approved with SABS (SANS 1783-20) underlay on 38mmx38mm SA pine battens @ 320mm C/C on 152x38mm SA pine grade 6 prefabricated timber (or similar approved) trusses @ 20 degrees @ max 760mm centres on 114mmx38mm timber wall plates fixed with approved 40mm serrated galvanised clout nails. Tapered ridge tiles to have 1:3 cement mortar mix at overlaps and to be laid in full. (cutting not allowed)



Detail A: Eaves, Door/Window Detail
Scale 1-20



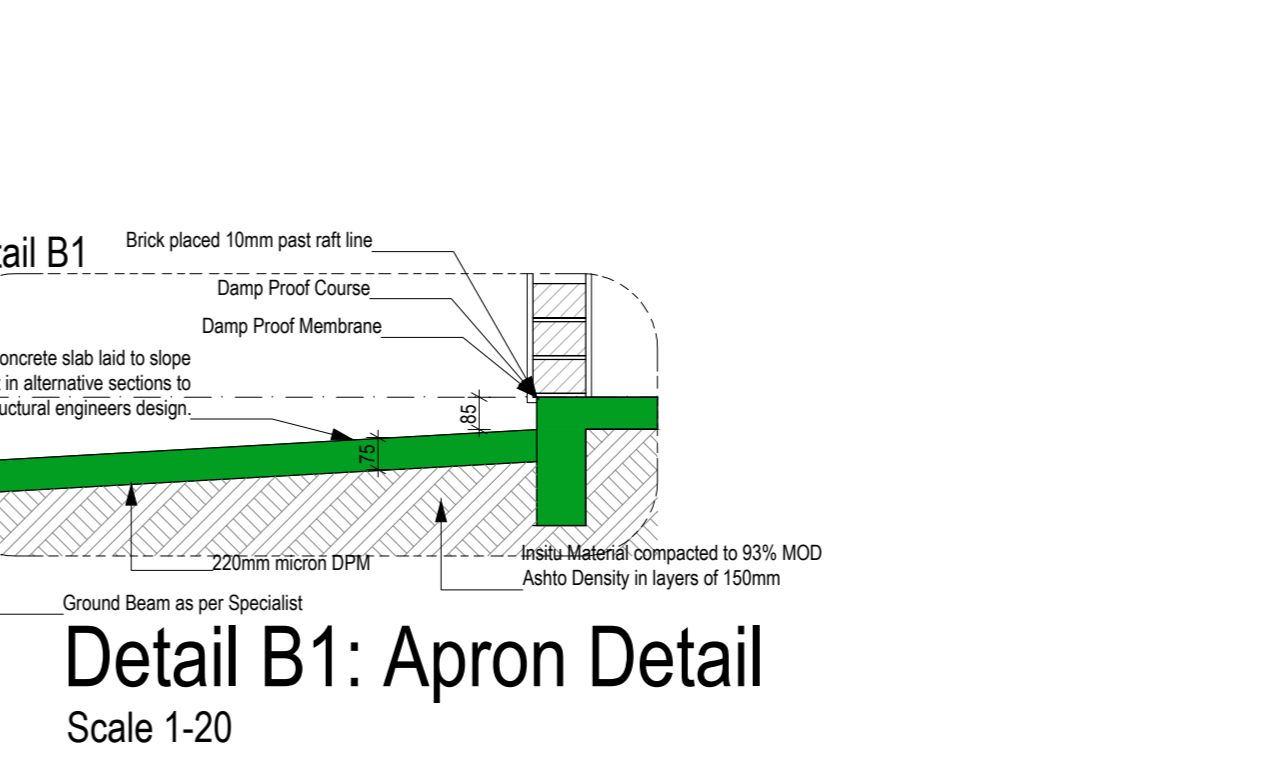
Detail B: Foundation
Scale 1-20



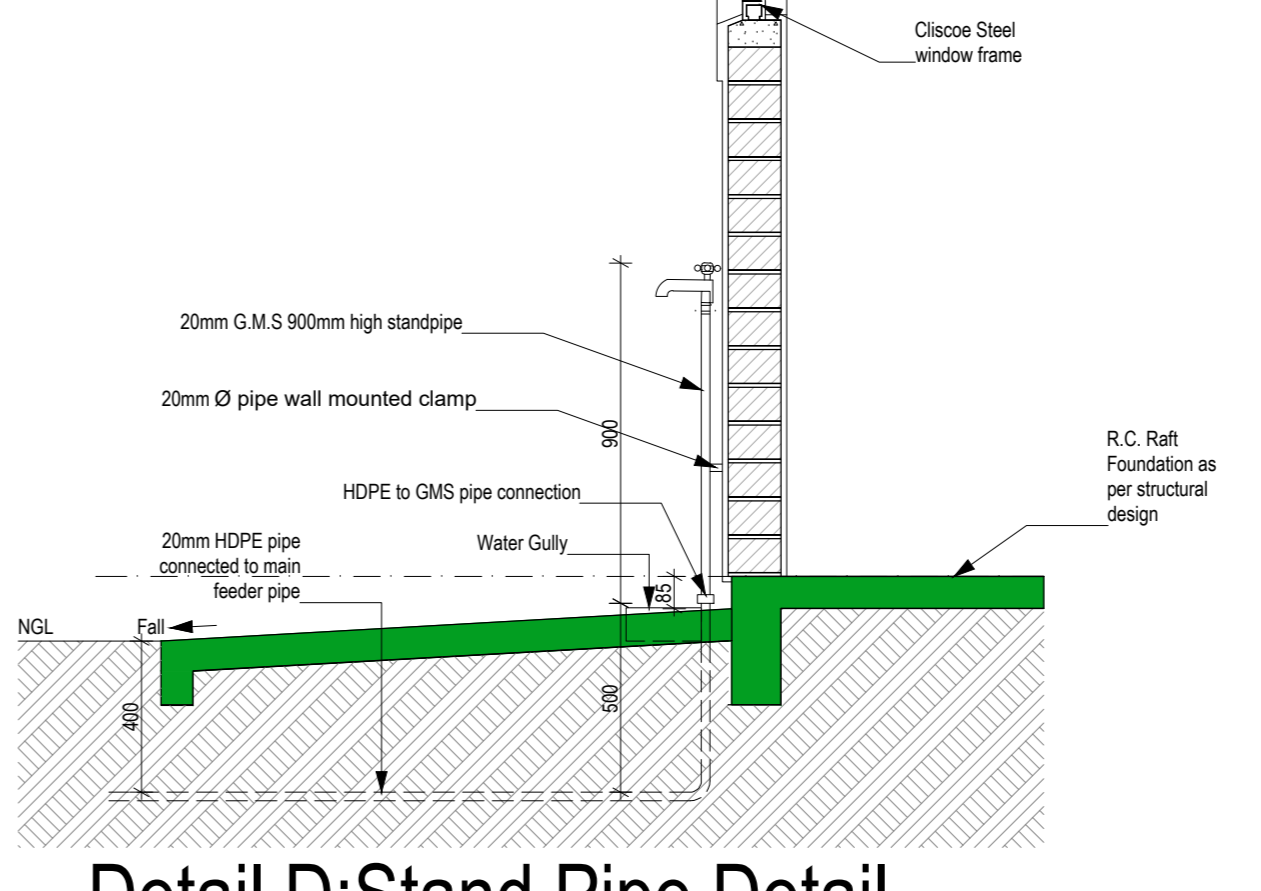
Detail F: Cliscope Window Detail
Scale 1-20

FITTING	SPECIFICATIONS	LOCATION	QTY	GRAPHIC
WC1	Water closet (WC) pan, glazed fire clay or glazed porcelain. Fixed to the floor with 1:3 cement mortar. The seat to be heavy duty plastic type with 140mm height of sanitary quality properly fixed to the pan. The pan must be 470mm above floor level.	PARA BATH	1 SET PER HOUSE	[Graphic]
WB1	Ceramic wash hand basin in bathroom with a min diameter 350mm, with 2 tap holes, hot and cold SABS approved mixer taps with ceramic wash hand basin. Silicon sealed at vertical walls and securely fixed to wall. Include all taps and waste pipe.	PARA BATH	1 PER PARA. UNIT	[Graphic]
WHB MIXER 2	2 tap holes, hot and cold SABS approved mixer taps with ceramic wash hand basin. Silicon sealed at vertical walls and securely fixed to wall. Include all taps and waste pipe.	PARA BATH	1 SETS	[Graphic]
SINK	Stainless steel sink with 2 tap holes and hot and cold SABS lever taps (no plastic taps allowed) to 450mm area. Sink to be at least 900mm long and securely fixed to wall with galvanised brackets & silicon sealed against walls must be 750mm above floor level.	KITCHEN	1 PER HOUSE	[Graphic]
SINK TAP	Cobra Star Extended 50 Tap - Chrome or similar and approved.	SINK	2 SET PER UNIT	[Graphic]
WH2	Ceramic wash hand basin in bathroom with a min diameter 350mm, with 2 tap holes, hot and cold SABS approved. Silicon sealed at vertical walls and securely fixed to wall. Include all taps and waste pipe.	BATH	1 PER BASIN	[Graphic]
MR1	6mm thick clear float glass shower mirror, size 600x900mm height with polished bevelled edges 4 times hold for and fixed, with chrome plated overhead mirror screen.	WHBS	1 PER BASIN	[Graphic]
TOILET ROLL HOLDER	Bathroom toilet roll holder chrome polished chrome	BATH	1 PER TOILET	[Graphic]
SR1	Plurisor 65 toilet shower mixer 150/150mm complete with Cobra 50Tap up hooded shower rose. Hooked, single function shower rose. Shower diameter, chrome-plated. Includes 1/2" BSP mixer tap, single function includes classic spray.	PARA BATH	1 PER SHOWER	[Graphic]
UNCERTLE	Cobra 235 150 shower pan mixer. Size 150x150mm. Includes 150mm copper pipe, and sliding valve range SANS 228 Type 2, CDR brass. JANSVIC-HEAT.	BATH	1 SET PER SHOWER	[Graphic]
SHOWER BATH MIXER	Cobra 215 150 shower pan mixer. Size 150x150mm. Includes 150mm copper pipe, and sliding valve range SANS 228 Type 2, CDR brass. JANSVIC-HEAT.	BATH	1 SET PER BATH	[Graphic]
BASIN TAPS MIXER	Cobra 215 150 shower pan mixer. Size 150x150mm. Includes 150mm copper pipe, and sliding valve range SANS 228 Type 2, CDR brass. JANSVIC-HEAT.	BATH	1 SET PER BASIN	[Graphic]

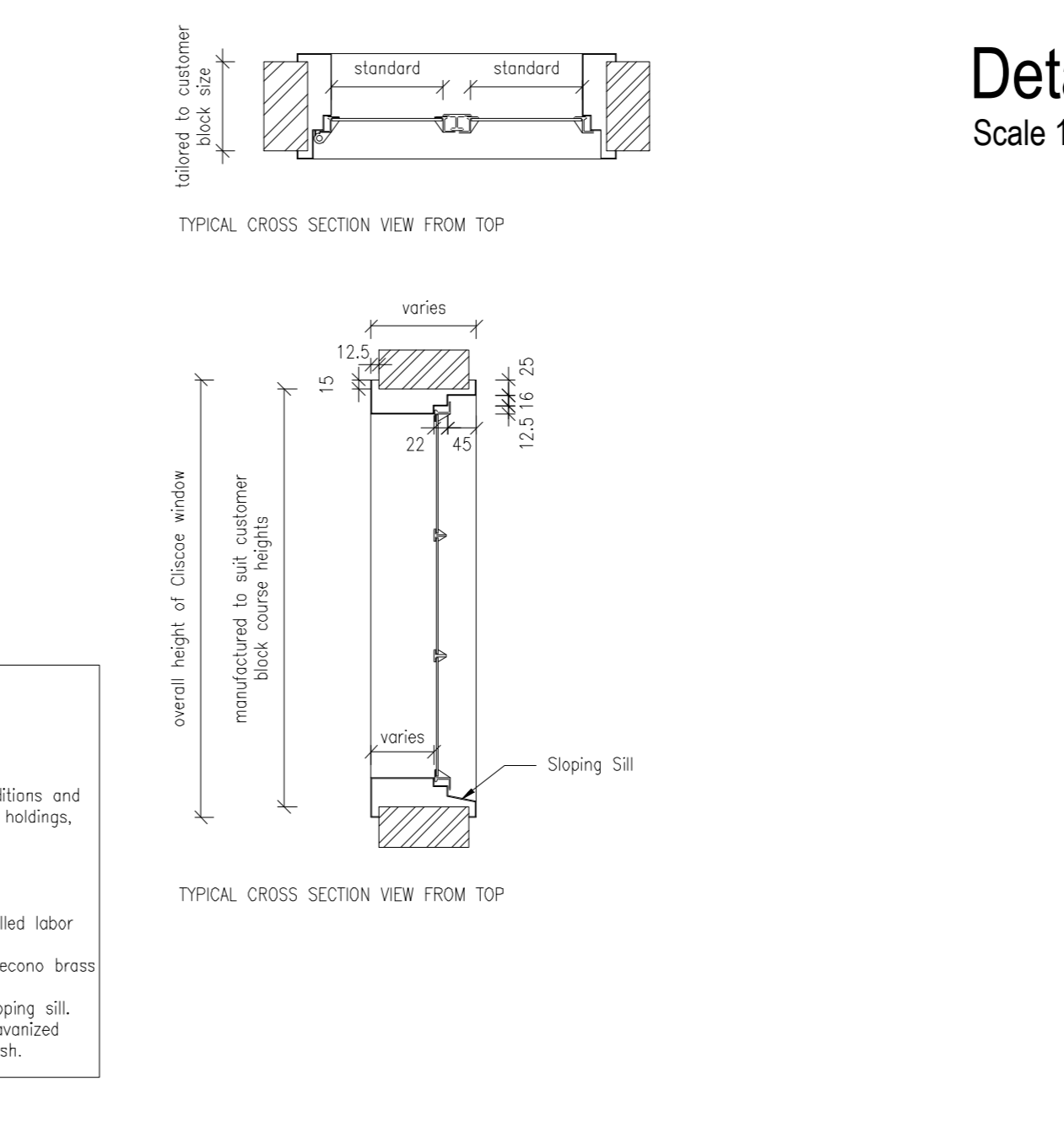
DOOR CODE	LOCATION	ALL EXTERNAL DOORS	ALL INTERIOR DOORS	PARA. W/ DOOR
NUMBER REQUIRED	DO	2 PER UNIT	3 PER UNIT	1 PER PARA. UNIT
DOOR DESCRIPTION	D1	1120x2000mm framed back solid metal framed and ledged door to be made out of oak, steel, finger lock, semi solid composite board/ply core gaffer lock block, composite board cross banding and hand/face veneer.	1120x2000mm Timber framed door to be made out of oak, steel, finger lock, semi solid composite board/ply core gaffer lock block, composite board cross banding and hand/face veneer.	1120x2000mm Timber framed door to be made out of oak, steel, finger lock, semi solid composite board/ply core gaffer lock block, composite board cross banding and hand/face veneer.
DOOR FINISH		1 x coat primer and 2 x coat approved wash primer to architect's spec.	1 x coat primer and 2 x coat approved medium gloss interior paint colour to architect's spec.	1 x coat primer and 2 x coat approved medium gloss interior paint colour to architect's spec.
FRAME DESCRIPTION		1 x 60mm steel double rebated jamb frame with 24 40mm rebated jamb pins and 24 40mm rebated jamb pins.	1 x 60mm steel double rebated jamb frame with 24 40mm rebated jamb pins and 24 40mm rebated jamb pins.	1 x 60mm steel double rebated jamb frame with 24 40mm rebated jamb pins and 24 40mm rebated jamb pins.
FRAME FINISH		1 x coat primer and 2 x coat approved medium gloss interior paint grey colour. Sample to Architect's approval.	1 x coat primer and 2 x coat approved medium gloss interior paint grey colour. Sample to Architect's approval.	1 x coat primer and 2 x coat approved medium gloss interior paint grey colour. Sample to Architect's approval.
IRON MONGERY & ACCESSORIES		3 lever mortice locks	3 lever mortice locks	3 lever mortice locks



Detail B1: Apron Detail
Scale 1-20



Detail D: Stand Pipe Detail
Scale 1-20



Detail C: Saw Cut Joint Detail
Scale 1-10

DOOR CODE	LOCATION	ALL EXTERNAL DOORS	ALL INTERIOR DOORS	PARA. W/ DOOR
NUMBER REQUIRED	DO	2 PER UNIT	3 PER UNIT	1 PER PARA. UNIT
DOOR DESCRIPTION	D1	1120x2000mm framed back solid metal framed and ledged door to be made out of oak, steel, finger lock, semi solid composite board/ply core gaffer lock block, composite board cross banding and hand/face veneer.	1120x2000mm Timber framed door to be made out of oak, steel, finger lock, semi solid composite board/ply core gaffer lock block, composite board cross banding and hand/face veneer.	1120x2000mm Timber framed door to be made out of oak, steel, finger lock, semi solid composite board/ply core gaffer lock block, composite board cross banding and hand/face veneer.
DOOR FINISH		1 x coat primer and 2 x coat approved wash primer to architect's spec.	1 x coat primer and 2 x coat approved medium gloss interior paint colour to architect's spec.	1 x coat primer and 2 x coat approved medium gloss interior paint colour to architect's spec.
FRAME DESCRIPTION		1 x 60mm steel double rebated jamb frame with 24 40mm rebated jamb pins and 24 40mm rebated jamb pins.	1 x 60mm steel double rebated jamb frame with 24 40mm rebated jamb pins and 24 40mm rebated jamb pins.	1 x 60mm steel double rebated jamb frame with 24 40mm rebated jamb pins and 24 40mm rebated jamb pins.
FRAME FINISH		1 x coat primer and 2 x coat approved medium gloss interior paint grey colour. Sample to Architect's approval.	1 x coat primer and 2 x coat approved medium gloss interior paint grey colour. Sample to Architect's approval.	1 x coat primer and 2 x coat approved medium gloss interior paint grey colour. Sample to Architect's approval.
IRON MONGERY & ACCESSORIES		3 lever mortice locks	3 lever mortice locks	3 lever mortice locks

WHEN IN DOUBT - ASK !!
1. This drawing is a preliminary design and is subject to change without notice. The contractor is advised to verify all dimensions and specifications with the architect and engineer before construction begins.
2. The contractor is responsible for obtaining all necessary permits and approvals from the relevant authorities.
3. All materials and workmanship must comply with the relevant South African standards and specifications.
4. The contractor must ensure that the construction is completed within the agreed time frame.
5. The contractor must provide a detailed program of works and a list of subcontractors.
6. The contractor must ensure that the construction is completed in accordance with the relevant safety regulations.
7. The contractor must ensure that the construction is completed in accordance with the relevant environmental regulations.
8. The contractor must ensure that the construction is completed in accordance with the relevant health and safety regulations.
9. The contractor must ensure that the construction is completed in accordance with the relevant fire and safety regulations.
10. The contractor must ensure that the construction is completed in accordance with the relevant accessibility regulations.

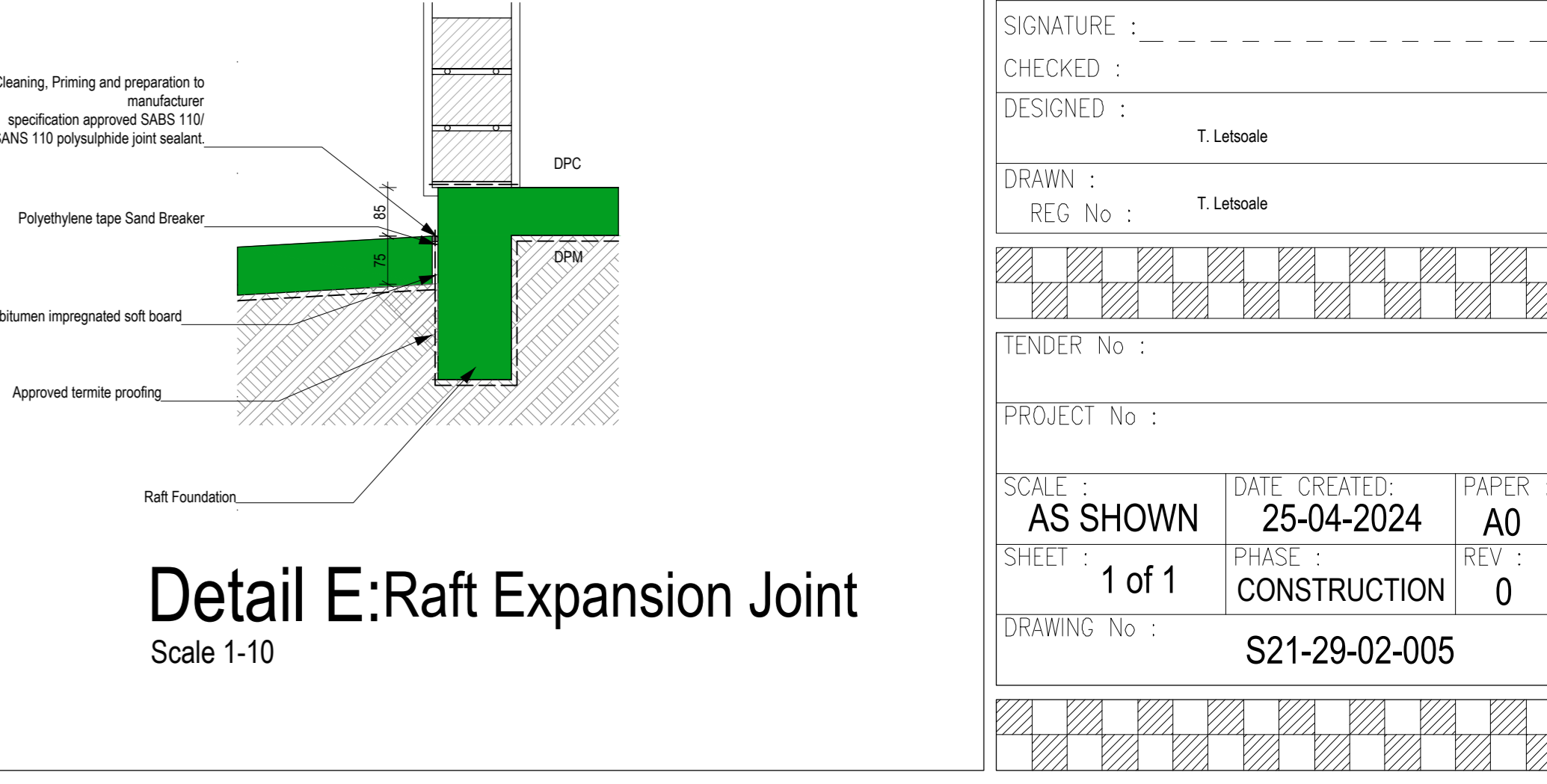
REV	DATE	DRN	NOTES

PROJECT TITLE:
House Vivian

ERF 444
Khayelitsha,
Western Cape

DRAWING TITLE:
**TYPE 1 (DISABILITY UNIT):
45m² GROUND, ROOF AND CEILING PLANS,
SECTIONS, ELEVATIONS, DOOR & WINDOW
SCHEDULE AND DETAILS**

SIGNATURE:
CHECKED: Shuc Eng, C. Masekela
SIGNATURE:
CHECKED:
DESIGNED: T. Letsoale
DRAWN: T. Letsoale
REG No:
PROJECT No:
SCALE: AS SHOWN
DATE CREATED: 25-04-2024
PAPER: A0
SHEET: 1 of 1
PHASE: CONSTRUCTION
REV: 0
DRAWING No: S21-29-02-005



Detail E: Raft Expansion Joint
Scale 1-10